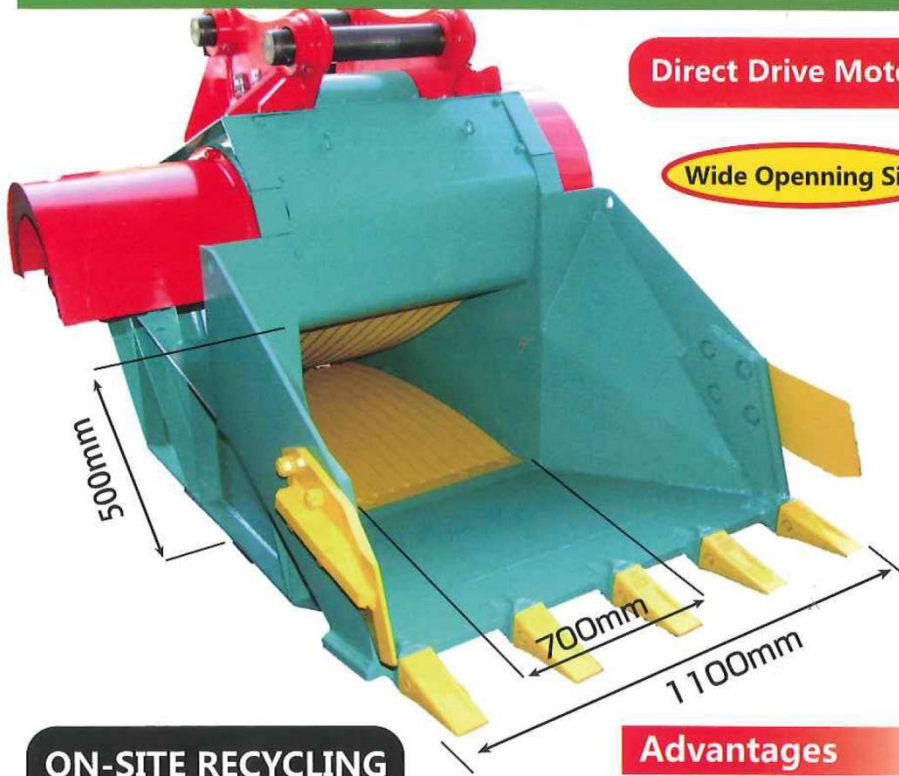


BUCKET CRUSHER



BUCKET CRUSHER

Bucket Crusher



Direct Drive Motor

Wide Opening Size

Magnet is Optional



Won the Minister's Prize in Japan
The Ministry of Land, Infrastructure, Transport and Tourism



ON-SITE RECYCLING

U.S. Patent



Chinese Patent

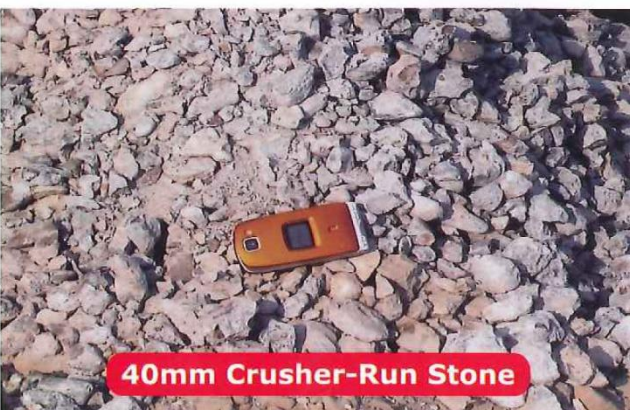


Advantages

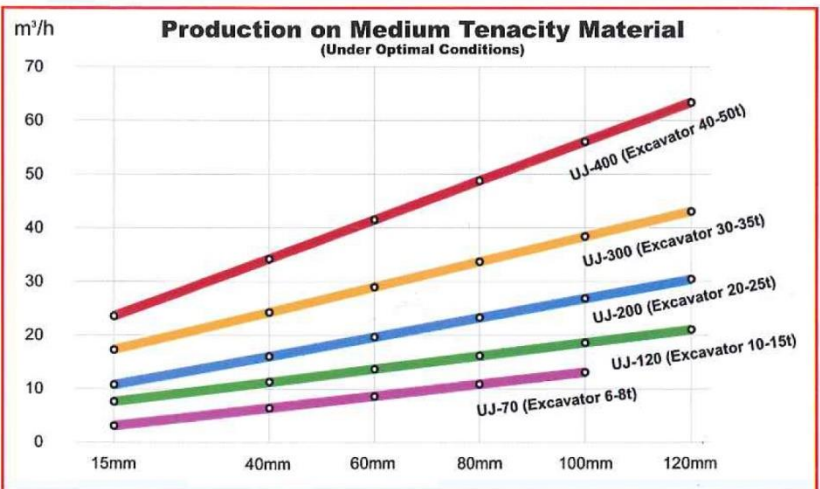
- By reversing the rotation, clogged materials can be easily released.
- The upper and lower jaw plates can be exchanged with each other, and the rear and front sections can also be exchanged.
- Compared with other European manufacturers's belt drive system, we are using direct drive system which makes maintenance much easier!
- With the 24V magnet (option), the reinforcing bars can be easily removed from crushed reinforcement.
- If our product "New Concrete Crusher" is used together, work efficiency will be increased much more.
- Drain line is necessary.



Discharge
15 ~ 120mm Adjustable



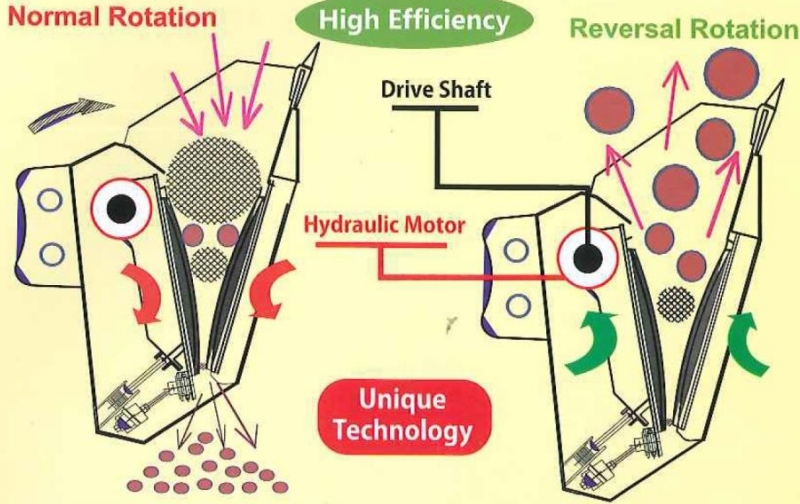
40mm Crusher-Run Stone



Model	15mm(m³/h)	40mm(m³/h)	60mm(m³/h)	80mm(m³/h)	100mm(m³/h)	120mm(m³/h)
UJ-70	3.34	6.67	8.46	11.6	13.23	21.41
UJ-120	7.87	11.89	13.86	16.71	18.65	30.38
UJ-200	11.12	16.52	19.92	23.12	16.19	43.58
UJ-300	16.97	24.21	28.81	33.59	38.01	63.81
UJ-400	23.82	34.68	42.23	48.27	56.19	

Direct Drive Position

when stuck back to normal at once by using reversal rotation



Big Concrete can also be crushed!

Dust Suppression Device is Optional

Adjustment Plate

Direct Drive Position

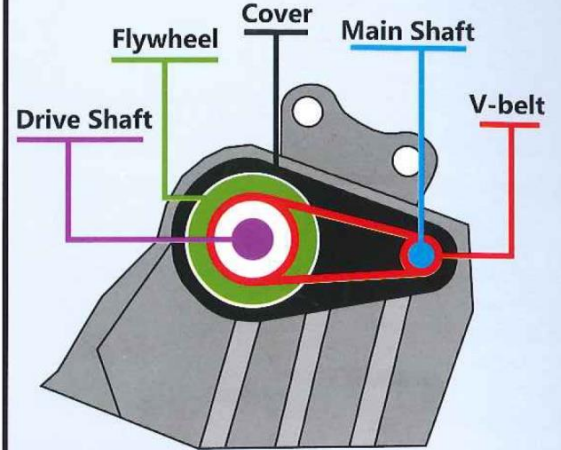
15~120mm
<Adjustable in 30 minutes>

Model	UJ-120	UJ-200	UJ-300	UJ-400
Excavator Weight (t)	10~15	20~25	30~35	40~50
Bucket Capacity (m3)	0.35	0.65	0.75	1.15
Oil Pressure (Mpa)	24.5	24.5	24.5	24.5
Oil Flow (l/min)	90	150	230	260
Feeding Size (mm)	550x450	700x500	900x500	1100x500
Adjustment Size (mm)	15~120	15~120	15~120	15~120
Dimensions (mm)	1820x1080x1200	2246x1380x1440	2367x1665x1576	2642x2010x1840
Overall Weight (kg)	1400	2500	3800	5200
24 Magnet (Option)	300x300	500x400	600x500	700x500

Other companies with V-belt drives

Low Work Efficiency
High Maintenance expenses

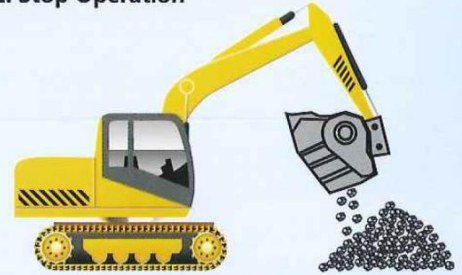
- ① Wear out of the V-belt (about 500 hours)
- ② Remove the huge cover and adjust tension of V-belt (about 100 hours each)



V-belt will always be slipped and stopped when overloaded

When stuck

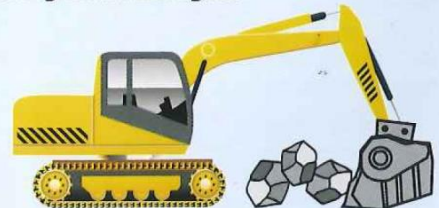
1. Stop Operation



2. Knock on the ground and force the crusher to spit stucked things out



3. Dig and crush again

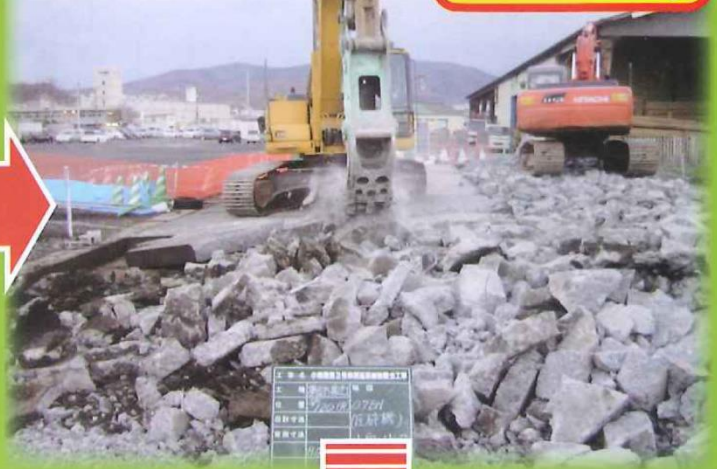


Work Flow (Use as Sub-base Course Material)

Before Demolition



Demolishing



Application

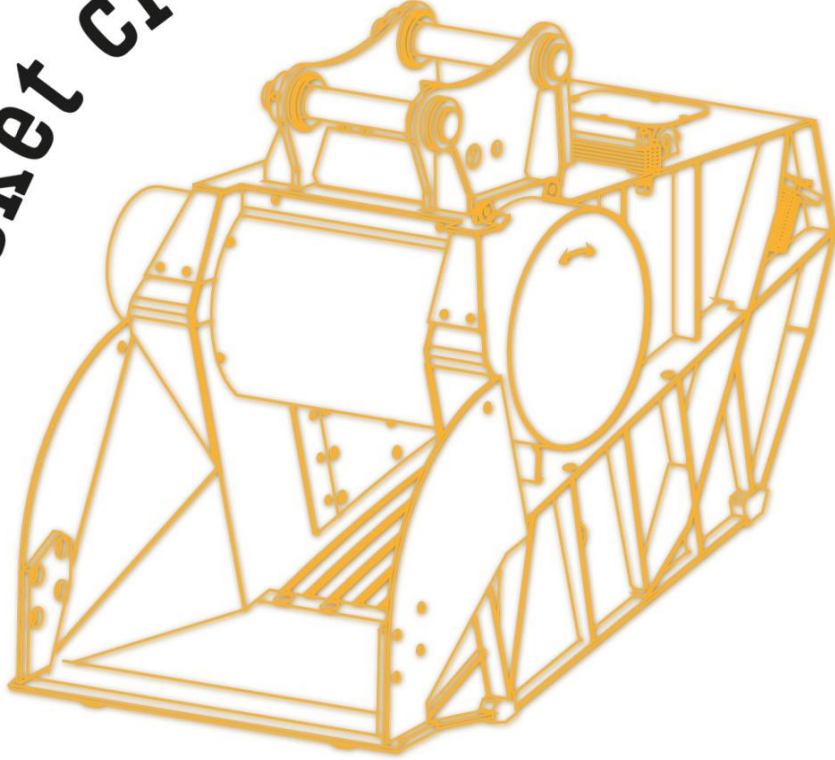


On-site Production





bucket crusher

**GALEN GRUP ÇELİK ÜRETİM
SANAYİ VE TİCARET A.Ş.**

İstanbul Yolu 30.Km 06980
Saray Kazan Ankara

Phone +90 (0312) 815 4694 - 95

Fax +90 (0312) 815 4616

www.galengroup.com.tr

galen@galengroup.com.tr

